

THE BEAUTY BUNCH



Ok ladies, our very first Tickled Pink Makeover went fabulous! Our model's name is Erin, a stay at home mother of three from Worthington. She's one of those lucky ladies that looks great without makeup, but was feeling that she looked a little tired from running after her three little ones; ages 5, 3 and 14 months. She had been wearing her hair the same way for years and wanted to try something different. The Beauty Bunch wanted to keep her looking natural but just lighten her up a little. Here's what they did:

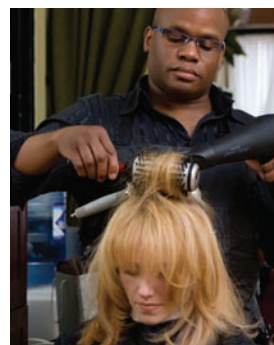
Cut:
 Erin wanted to keep as much length as possible yet we wanted to give her a new and fresh look. We took about two inches off the perimeter and point cut layers throughout the interior creating lots of body and movement. Erin has a great face and beautiful eyes, and by creating a heavier and shattered fringe we were really able to make them a focal point.



Color:
 For Erin's Base Color we used Luo Permanent Haircolor. Luo Color is a permanent haircolor that processes in 20 minutes

and provides a more dimensional and luminous end result.

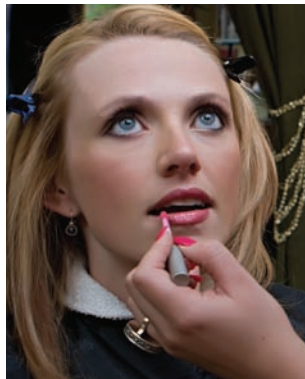
For dimension we balayaged, a free hand highlighting technique, Ammonia-Free Platinum to a soft vanilla shade and Hi.Richesse (ammonia free demi-permanent color) for a strawberry blonde lowlight.



Style:
 Brian prepped the style with Texture Expert's Densite, and layered Mousse Volupte on the roots and Smooth

Essence through the midlengths and ends. We really wanted to create a sassy and flirty look with lots of movement. Brian used a variety of round brushes in the 1.5 inch to 2.5 inch range to provide volume and body. Erin's style was finished with Infinium 4 which is a dry hairspray that dries weightless and touchable yet has style memory.

Makeup:
 Erin's base makeup was applied using Bare Minerals Lt. Formula. We used Warmth, a bronzing powder, to create definition in the softness in the cheek area. To finish to cheek look, Pure Radiance was used on the upper cheekbone to create a luminous glow. This look was finished with Mineral Veil, which provides a weightless shield to protect the skin.



Erin's eyes are beautiful and to accent them we used a champagne base shade, and applied a light golden pink shade to the lid and crease. To accentuate and bring out her eyecolor we applied a green shade that has hint of gold in it as well in the crease. To line the eyes we chose an espresso colored brown eyeliner and applied inside the lower rim and smudged it out the outside corner for a slightly smoky affect. In the inside corner of her eye we applied a gold shadow to create a warm glow.

On Erin's lips we chose a lip gloss in a coral shade that leans more on the pink side. This shade really tied the look together and created some color while the gloss maintained sheerness as well. ■



TIPS FROM THE BEAUTY BUNCH

HAIR TIP:

It is extremely important in the summer months to protect your hair like you would your skin in the sun. The sun, ocean and chlorine all play a major part in damage that can occur to your hair during the 'fun in the sun' months. We recommend using a UV protectant like Serie Expert's Solar Sublime. Solar Sublime is designed to protect the hair before, during and after sun exposure.

MAKEUP TIP:

Many ladies scale down on the amount of makeup they wear in the summer months for a fresher look. A great way to make your eyes "pop" and sparkle is to apply an eye shadow in a pearly shade of champagne, gold, copper or light pink on the lid. Wet some eye shadow on an eyeliner brush and apply it on the inside corner of the eye and lightly extend in under the eye. This draws the attention to the eye while creating a glowing affect with the eye shadow choice.



WALDO'S ON HIGH HAIR SALON STAFF

I have been trying to grow my hair out, but I cannot get it to do anything and it has no shape. I do not want to get it cut off. What do you suggest?

MISSY - CLINTONVILLE, OH

For optimum results and prevention later on, it is recommended to maintain trims even if you desire for your hair to grow. I recommend a trim every 6-8 weeks and adding some soft layering to make the shape last longer during the grow-out process. It is also imperative to take care of your hair by using the correct styling products and treatments to protect and maintain the hair fiber. I recommend a Serie Expert Powerdose Treatment at least every 4 weeks.

My color always seems to fade, so what is the best way to maintain my color in-between visits?

BROOKE - COLUMBUS, OH

Q&A WHAT WOULD WALDO DO?

Every color fades, however there are a few ways to prevent discoloration. First, I highly recommend trying to shampoo every other day if not every third. For those of you that have to restyle every day, it is fine to wet the hair down. This will make the hair feel clean without actually shampooing it. Remember, if you are not putting color in, you are taking color out so it is necessary to use a color shampoo and/or conditioner. We recommend Serie Expert's Vitamino Color Shampoo to cleanse followed with The Colorist Collection Shampoo or Conditioner. The Colorist Collection contains semi-permanent colorants that will keep your color fresher longer and can be customized to match your professional color.

My skin tends to get oily in the summer months and I can never seem to match a foundation after I get a tan. What product can I use that will give my skin coverage but is light enough that I can't feel it?

CHRISTINA - COLUMBUS, OH

I highly recommend a tinted moisturizer in the summer, preferably one with an SPF 15 to protect the skin and also give some light coverage. I also find that Bare Minerals is great for coverage and also feels very light and weightless on the skin. The Mineral Veil is a great product for controlling shine. ■